

# N/N ONE

BRUSSELS EUROPA









# YOUR MEET/NG ROOM /N THE HEART OF THE EUROPEAN CAP/TAL

**N/NE ONE** is a brand-new pop-up venue, ideally located in a Town Mansion in the heart of the European district.

**N/NE ONE** is an atypical venue that combines architecture with art, which gives that little extra touch to your event, meeting or debate. The venue is very modular thanks to its plenary room up to 150 people and no less than 8 break-out rooms from 30 to 68 people. **N/NE ONE** is easily accessible by public transport, situated only 10m from the metro station Maelbeek and 300m from the Schuman train station.

There are also several parking's at your disposal, within walking distance.

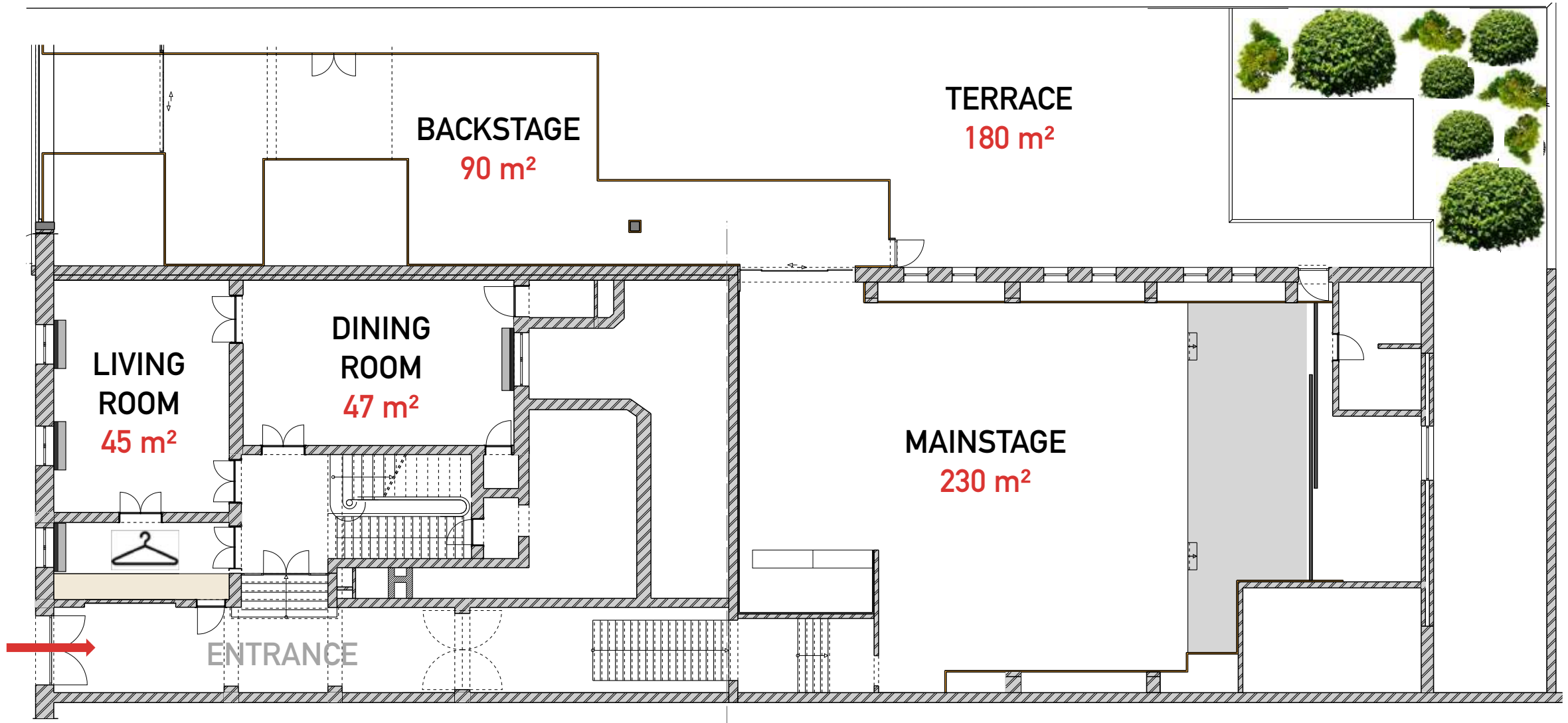
**N/NE ONE**, your exceptional corporate venue!

**ADDRESS/** Rue de la Loi – Wetstraat 91 / 1000 Brussels / Belgium

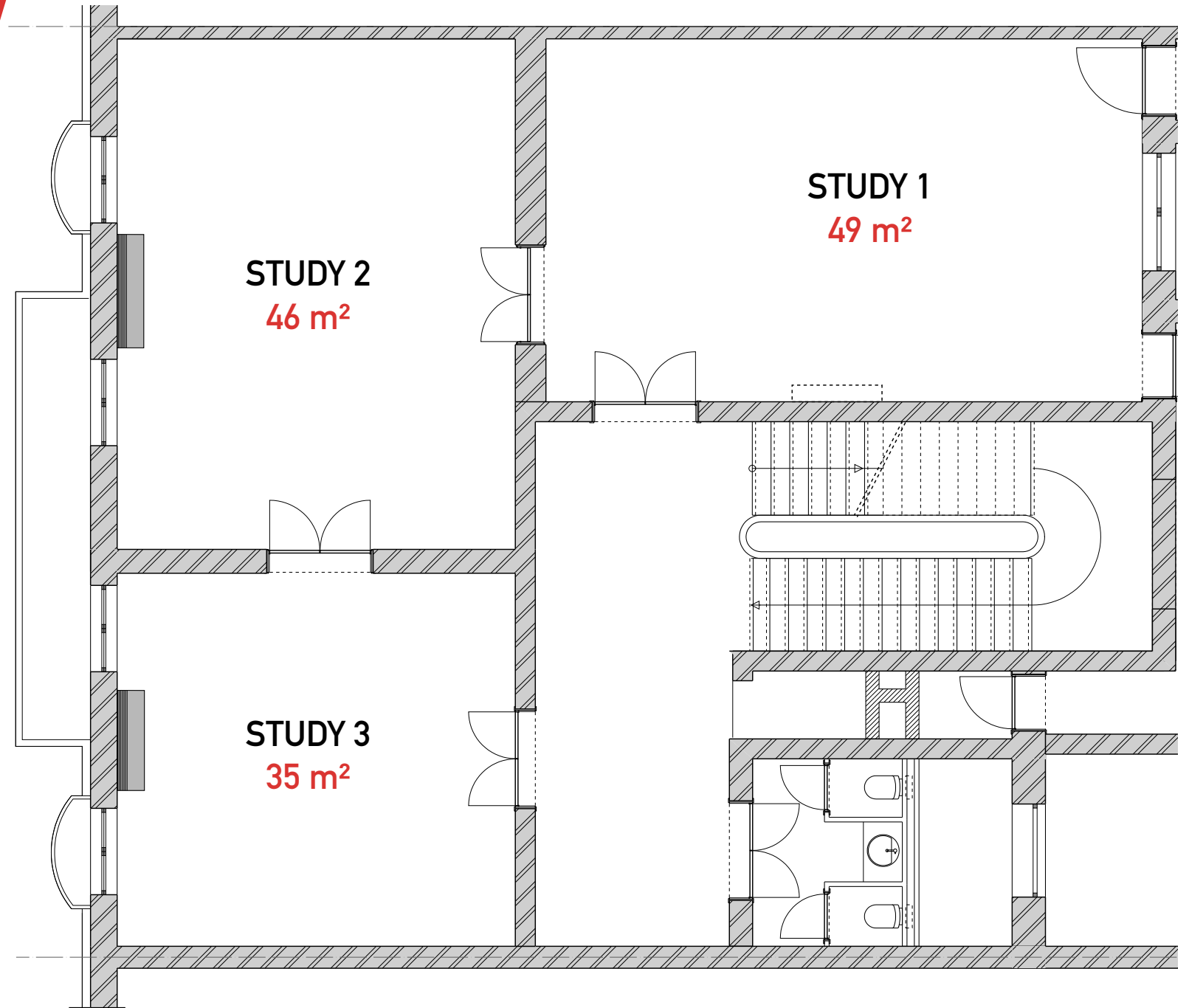


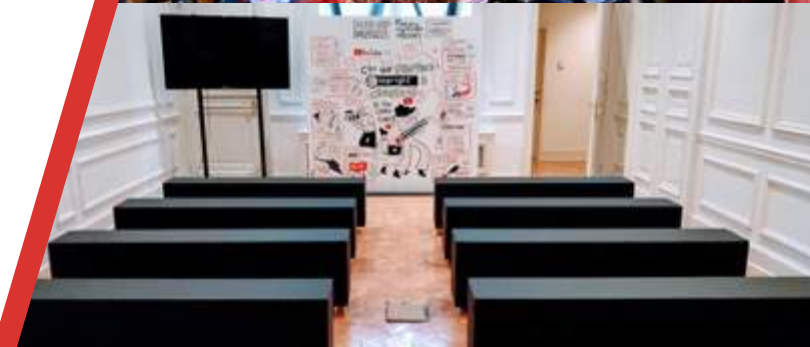
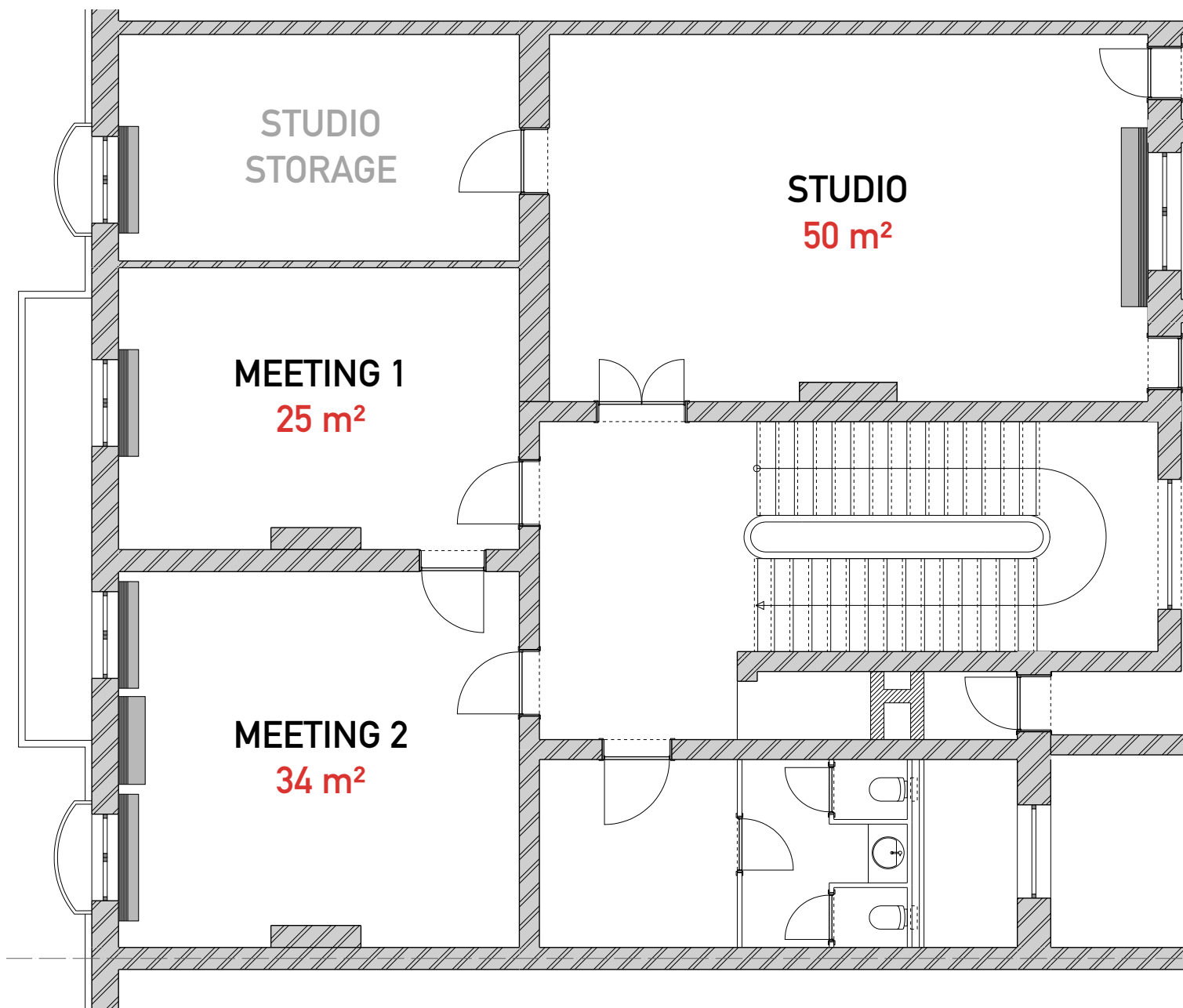
# FLOORPLANS /

## LEVEL 0



# FLOORPLANS / LEVEL 1





## FLOORPLANS / LEVEL 2





# CAPACITY CHART

ROOMS	SURFACE M <sup>2</sup>	THEATER ..... .....	WALKING 🧑🧑	SEATED
Main Stage	230	150	200	120
Backstage	90	N/A	120	N/A
Main / Backstage	320	N/A	320	N/A
Dining Area	47	50	50	30
Living Area	45	50	35	30
Dining / Living Area	92	N/A	80	N/A
Study 1	49	68	50	30
Study 2	46	48	50	30
Study 3	35	30	30	10
Studio	50	30	N/A	N/A
Meeting 1	25	30	30	10
Meeting 2	34	30	30	10

# PREFERRED TECHN/CAL PARTNER



**LSE** will assist you with the creation and production of any type of event related to your company, whether it is a product launch, office party or any other special event.

With an experience of more than 20 years in the event industry, **LSE** provides an unequalled know-how for a guaranteed everlasting memory of your event. **LSE** will help you from the very beginning of the creative process, always keeping an eye on the allocated budget, until the fulfilment of the project. Every concept they create is based on the initial request and the different technical constraints of the location & budget.

**LSE** can produce a large panel of event related techniques such as lighting, laser & video projections, water & pyro effects and many more!

Do not hesitate to challenge them, they love it!

CONTACT / Brice de Caritat / @: [brice@lse.eu](mailto:brice@lse.eu) / ☎ +32 472 79 86 19





# PR/V//LEGED CATER//NG PARTNER



For your event, every detail is important. **Great traiteur** coordinates every aspect of it: products, equipment, service and staging. We are a professional team that leaves nothing to chance and adds the right touches of flavor that make the difference.

Special care is given to the sourcing of your products. We create menus meeting specific dietary requirements, incorporating more sustainable ingredients and responding to customer demands for health without compromising taste.

In order to always respect the committed engagement, **Great Traiteur** continuously adapts itself to your requirements in order to offer an event equal to your image.

**Great Traiteur** is a modern company, committed to its core values, who has a sustainable approach and is proud to carry an Eco Dynamic label.

CONTACT / Gilles Mollitor / @: [info@great-traiteur.be](mailto:info@great-traiteur.be) / ☎: +32 2 880 87 80



# PR/V//LEGED CATER//NG PARTNER



From early morning 'till the break of dawn, **Eating Point** has all the answers to your needs for your commercial events.

## ORIGINAL

Let your guests enjoy quality food, fashion food-corners and hip staff. Ease the networking by creating a natural flow and make your guests feel comfortable.

Each 'themed food corner' is suitable for 50 to 100 guests. At each counter, your guests will discover 3 different cuisines. We serve those delicious meals on both sides of the counter.

We adapt our capacity to your needs.

First choose your main dish. Add some sides, drinks or other extras. Then **relax**, we'll do the rest!



CONTACT/ Amandine De Kock/ @: [amandine@eatingpoint.be](mailto:amandine@eatingpoint.be)/ ☎: +32 476 95 35 77





# N/NE ONE

BRUSSELS EUROPA

## CONTACT/

Gilles Poot Baudier

☎: +32 474 61 61 10

Laurent Demeuter

☎: +32 474 97 35 74

@: [events@nineone.brussels](mailto:events@nineone.brussels)

Follow us on

